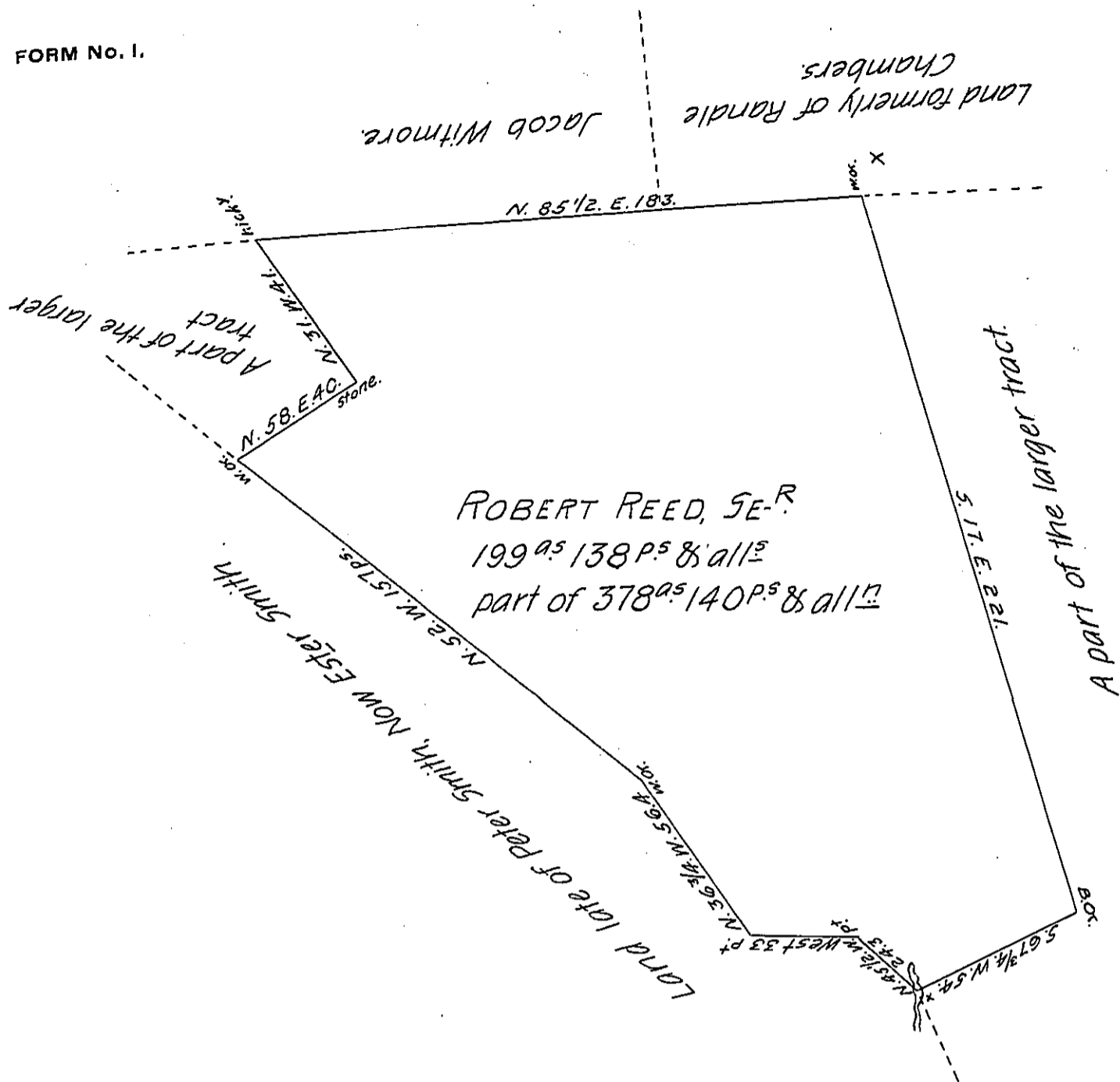


FORM No. 1.



A Draught of a Tract of Land situate in Middleton Township, Cumberland County. Containing 199^{as} 138 P^s and allowance of six $\frac{1}{2}$ Cent for Roads &^s It being part of a Larger tract of 378^{as} 140 P^s & allowance. Surveyed In pursuance of a warrant granted to Robert Reed, Se^r dated the 4th day of February 1741.*
 Surveyed and Divided 18th day of August 1809.

Wm Wheeler, D. S.

To Andrew Porter, Esquire,

S. G.

* Say an Entry to John Reed Dated the 4th day of February 1741.

IN TESTIMONY that the above is a copy of the original remaining on file in the Department of Internal Affairs of Pennsylvania, made conformably to an Act of Assembly approved the 16th day of February, 1833, I have hereunto set my Hand and caused the Seal of said Department to be affixed at Harrisburg, this twenty-first day of AUGUST 1906.

Geo R Brown
 Secretary of Internal Affairs.